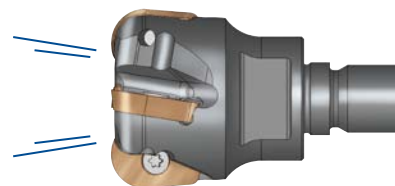
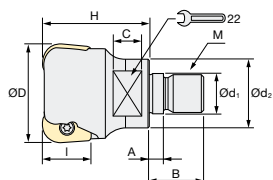
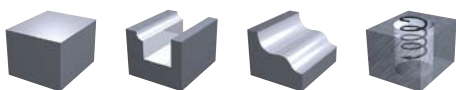


Indexable Milling Tools

AHRM | Mini – Advanced Heavy Roughing – Modular

Q max High Efficient	Jet Air Hole	▽ Roughing	HRC 62	No. of Teeth 3~4
--------------------------------	------------------------	----------------------	------------------	----------------------------



Torque on screw:
3 Nm

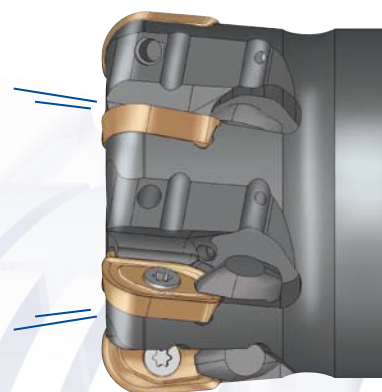
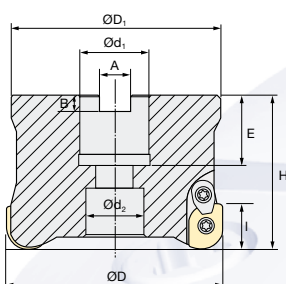
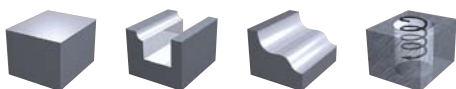
ØD -0.1/-0.2

Modular Type													Inserts
ID Code	Item Code	Flutes	ØD	H	Ød ₁	M	Ød ₂	A	B	C	E	I	Inserts
FH149	AHRM-4035R-3-M16	3	35	45	17	M16	29	6	23	12	22	18	ZDNW... ZDMT...
FH150	AHRM-4042R-4-M16	4	42										

Wrench Size

AHRB | Mini – Advanced Heavy Roughing – Bore Type

Q max High Efficient	Jet Air Hole	▽ Roughing	HRC 62	No. of Teeth 5~9
--------------------------------	------------------------	----------------------	------------------	----------------------------



Torque on screw:
3 Nm

ØD -0.1/-0.2

Bore Type													Inserts
ID Code	Item Code	Flutes	ØD	H	Ød ₁	Ød ₂	M	ØD ₁	A	B	E	I	Inserts
FH151	AHRB-4052RM-5-22	5	52	50	22	15	10*	40	10.4	6.3	20	18	ZDNW... ZDMT...
FH152	AHRB-4052RM-5-27		63			17	12*	45					
FH153	AHRB-4066RM-6-27	6	66	50	27	20	12	60	12.4	7	22		
FH154	AHRB-4080RM-7-27	7	80										
FH155	AHRB-4100RM-8-32	8	100	63	32	26	16	70	14.4	8	25.5		
FH156	AHRB-4125RM-9-40	9	125		40	32	20	105	16.4	9	30		

* Special Screw

Indexable Milling Tools

INSERTS AHR | Mini – Advanced Heavy Roughing – Modular

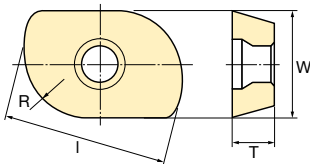


Fig.1: ZDNW Standard Shape

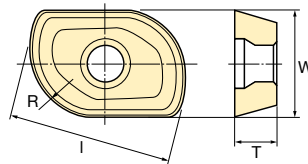


Fig.2: ZDMT with Breaker



PVD Main grade
PVD Thick layer for soft materials + Wet Cutting and Stainless Steels
PVD Tough grade for pre-hardened steels

ID Code	Item Code	Tolerance Class	JX Coated				JS Coated	JP Coated	Size (mm)				Shape				
			JX1005	JX1015	JX1045	JX1060	JS4060	JP4020	R	I	T	W					
WF674	ZDNW1204080TR JX1005	N	•						8	21.5	4.76	12.7	Fig.1				
WF675	ZDNW1204080TR JX1015			•													
WF677	ZDNW1204080TR JX1045				•												
WF678	ZDNW1204080TR JX1060					•											
WF679	ZDNW1204080TR JS4060						•										
WF680	ZDNW1204080TR JP4020						•										
WF681	ZDMT1204080TR JX1005	M	•														Fig.2
WF682	ZDMT1204080TR JX1015			•													
WF684	ZDMT1204080TR JX1045				•												
WF685	ZDMT1204080TR JX1060					•											
WF686	ZDMT1204080TR JS4060						•										
WF687	ZDMT1204080TR JP4020							•									

Type	Cutter body	Clamp Screw		Clamp Piece Set		Wrench	
		ID-Code	Item-Code	ID-Code	Item-Code	ID-Code	Item-Code
Modular	AHRM-40 ...	ET048	262-142	-	-	ET049	105-T15
Bore Type	AHRB-4 ...			ET054	CM4-141		
		Special Screw					
		ID-Code		Item Code			
Bore Type	Ø52 M10 (Ød ₁ =22)	ET051		100-902			
Bore Type	Ø52 M12 (Ød ₁ =27)	ET055		100-903			

AHR-Mini: Helical Bore Formula

Input data	Outside Diameter	Ø 35	Ø 42	Ø 52	Ø 66	Ø 80	Ø 100	Ø 125
Radius of insert	R8	R8	R8	R8	R8	R8	R8	R8
Width of insert: W _i	12	12	12	12	12	12	12	12
Ramping angle		10°	5°	3.5°	2.5°	2°	1.5°	1°
Flat bottom	Minimum Diameter	53	67	87	115	143	183	233
	Best for flat bottom	54	68	88	116	144	184	234
	Maximum Diameter	55	69	89	117	146	185	235
Through hole	Minimum Diameter	47	61	81	109	137	177	227
	Maximum Diameter	68	82	102	130	158	198	248