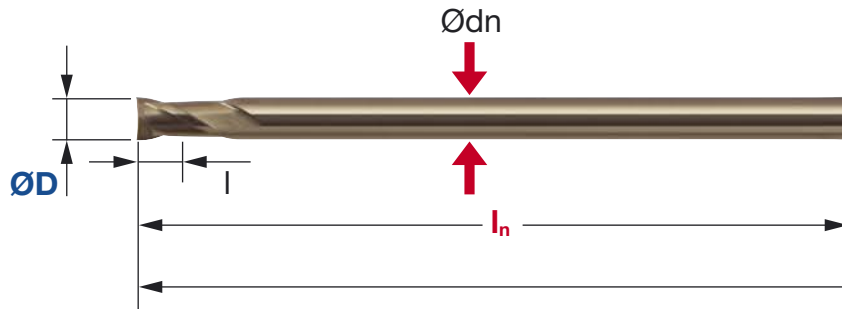
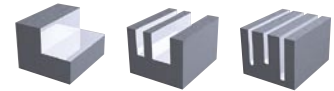


High Speed Deep Precision Machining

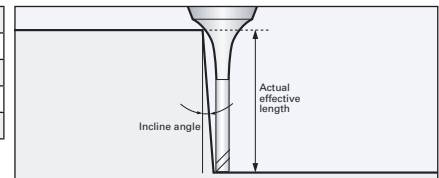
EPDS | Epoch Deep Square

V max High Speed		HRC 70	No. of Teeth 2
----------------------------	--	------------------	--------------------------



Carbide Micro Grain	TH45+ Nano-PVD Coating	Rake Angle Positive
-------------------------------	----------------------------------	-------------------------------

Helix Angle	30°
D 0.1 ~ 0.5	0/-0.007
D 0.6 ~ 0.9	0/-0.010
D 1.0 ~ 4.0	0/-0.015
d	h5



Ø 0.1 – Ø 1.0 mm

ID Code	Item Code	Z	Size			L	Ød	Actual Effective Length in Incline angles					
			ØD	In	l			0.5°	1°	1.5°	2°	3°	
EP 558 ©	EPDS-2001-0,3	2	0.1	0.3	0.15	0.08	45	4	0.46	0.49	0.51	0.53	0.58
EP 559 ©	EPDS-2001-0,5	2	0.1	0.5	0.15	0.08	45	4	0.67	0.71	0.74	0.76	0.82
EP 560 ©	EPDS-2001-1	2	0.1	1	0.15	0.08	45	4	1.2	1.25	1.29	1.33	1.4
EP 267	EPDS-2002-0,5	2	0.2	0.5	0.3	0.17	50	4	1.21	1.38	1.55	1.72	2.06
EP 561 ©	EPDS-2002-1	2	0.2	1	0.3	0.17	50	4	1.78	1.99	2.2	2.4	2.78
EP 268	EPDS-2002-1,5	2	0.2	1.5	0.3	0.17	50	4	2.34	2.59	2.83	3.05	3.47
EP 562 ©	EPDS-2003-1	2	0.3	1	0.45	0.27	50	4	1.78	1.99	2.2	2.4	2.78
EP 269	EPDS-2003-1,5	2	0.3	1.5	0.45	0.27	50	4	2.34	2.59	2.83	3.05	3.47
EP 563 ©	EPDS-2003-2,5	2	0.3	2.5	0.45	0.27	50	4	3.44	3.76	4.05	4.31	4.79
EP 270	EPDS-2003-3	2	0.3	3	0.45	0.27	50	4	3.99	4.34	4.64	4.92	5.42
EP 565 ©	EPDS-2004-1	2	0.4	1	0.6	0.37	50	4	1.78	1.99	2.2	2.4	2.78
EP 271	EPDS-2004-1,5	2	0.4	1.5	0.6	0.37	50	4	2.34	2.59	2.83	3.05	3.47
EP 566 ©	EPDS-2004-2	2	0.4	2	0.6	0.37	50	4	2.89	3.18	3.44	3.69	4.14
EP 272	EPDS-2004-3	2	0.4	3	0.6	0.37	50	4	3.99	4.34	4.64	4.92	5.42
EP 588 ©	EPDS-2004-4	2	0.4	4	0.6	0.37	50	4	5.08	5.48	5.82	6.12	6.67
EP 273	EPDS-2004-5	2	0.4	5	0.6	0.37	50	4	6.17	6.6	6.97	7.3	7.89
EP 567 ©	EPDS-2005-1	2	0.5	1	0.75	0.47	50	4	1.78	1.99	2.2	2.4	2.78
EP 274	EPDS-2005-2	2	0.5	2	0.75	0.47	50	4	2.89	3.18	3.44	3.69	4.14
EP 568 ©	EPDS-2005-3	2	0.5	3	0.75	0.47	50	4	3.99	4.34	4.64	4.92	5.42
EP 275	EPDS-2005-4	2	0.5	4	0.75	0.47	50	4	5.08	5.48	5.82	6.12	6.67
EP 569 ©	EPDS-2005-5	2	0.5	5	0.75	0.47	50	4	6.17	6.6	6.97	7.3	7.89
EP 276	EPDS-2005-6	2	0.5	6	0.75	0.47	50	4	7.24	7.72	8.12	8.47	9.09
EP 570 ©	EPDS-2006-2	2	0.6	2	0.9	0.57	50	4	2.89	3.18	3.44	3.69	4.14
EP 277	EPDS-2006-4	2	0.6	4	0.9	0.57	50	4	5.08	5.48	5.82	6.12	6.67
EP 571 ©	EPDS-2006-6	2	0.6	6	0.9	0.57	50	4	7.24	7.72	8.12	8.47	9.09
EP 278	EPDS-2006-8	2	0.6	8	0.9	0.57	50	4	9.38	9.93	10.37	10.76	11.45
EP 279	EPDS-2007-4	2	0.7	4	1.05	0.67	50	4	5.08	5.48	5.82	6.12	6.67
EP 280	EPDS-2007-10	2	0.7	10	1.05	0.67	50	4	11.51	12.11	12.6	13.03	13.76
EP 281	EPDS-2008-4	2	0.8	4	1.2	0.77	50	4	5.08	5.48	5.82	6.12	6.67
EP 572 ©	EPDS-2008-6	2	0.8	6	1.2	0.77	50	4	7.24	7.72	8.12	8.47	9.09
EP 282	EPDS-2008-8	2	0.8	8	1.2	0.77	50	4	9.38	9.93	10.37	10.76	11.45
EP 283	EPDS-2008-12	2	0.8	12	1.2	0.77	55	4	13.63	14.28	14.81	15.26	16.04
EP 284	EPDS-2009-6	2	0.9	6	1.35	0.86	60	4	7.29	7.75	8.14	8.49	9.11
EP 285	EPDS-2009-12	2	0.9	12	1.35	0.86	55	4	13.66	14.3	14.82	15.28	16.06
EP 573 ©	EPDS-2010-2	2	1	2	1.5	0.96	50	4	2.95	3.23	3.48	3.72	4.17
EP 574 ©	EPDS-2010-4	2	1	4	1.5	0.96	50	4	5.13	5.52	5.85	6.15	6.69
EP 286	EPDS-2010-6	2	1	6	1.5	0.96	50	4	7.29	7.75	8.14	8.49	9.11
EP 287	EPDS-2010-8	2	1	8	1.5	0.96	50	4	9.42	9.95	10.4	10.78	11.46
EP 288	EPDS-2010-10	2	1	10	1.5	0.96	50	4	11.55	12.14	12.62	13.04	13.78
EP 289	EPDS-2010-12	2	1	12	1.5	0.96	55	4	13.66	14.3	14.82	15.28	16.06
EP 290	EPDS-2010-14	2	1	14	1.5	0.96	55	4	15.76	16.46	17.01	17.49	18.7
EP 291	EPDS-2010-16	2	1	16	1.5	0.96	55	4	17.86	18.6	19.19	19.69	21.36

© = New Item

Milling Tools always on Stock in Germany

High Speed Deep Precision Machining

Ø 1.2 – Ø 4.0 mm

ID Code	Item Code	Z	Size		l	Ødn	L	Ød	Actual Effective Length in Incline angles				
			ØD	l _n					0.5°	1°	1.5°	2°	3°
EP 292	EPDS-2012-6	2	1.2	6	1.8	1.15	50	4	7.33	7.78	8.17	8.51	9.13
EP 293	EPDS-2012-12	2	1.2	12	1.8	1.15	55	4	13.69	14.33	14.84	15.29	16.08
EP 294	EPDS-2014-6	2	1.4	6	2.1	1.34	50	4	7.37	7.81	8.19	8.54	9.15
EP 295	EPDS-2014-10	2	1.4	10	2.1	1.34	50	4	11.61	12.19	12.66	13.08	13.8
EP 296	EPDS-2014-16	2	1.4	16	2.1	1.34	55	4	17.92	18.64	19.22	19.72	21.42
EP 575 ©	EPDS-2015-4	2	1.5	4	2.25	1.44	50	4	5.22	5.59	5.91	6.2	6.74
EP 297	EPDS-2015-6	2	1.5	6	2.25	1.44	50	4	7.37	7.81	8.19	8.54	9.15
EP 576 ©	EPDS-2015-10	2	1.5	10	2.25	1.44	50	4	11.61	12.19	12.66	13.08	13.8
EP 298	EPDS-2015-12	2	1.5	12	2.25	1.44	55	4	13.72	14.35	14.86	15.31	16.11
EP 577 ©	EPDS-2015-16	2	1.5	16	2.25	1.44	55	4	17.92	18.64	19.22	19.72	x
EP 299	EPDS-2015-18	2	1.5	18	2.25	1.44	60	4	20.01	20.77	21.38	21.9	x
EP 300	EPDS-2015-25	2	1.5	25	2.25	1.44	65	4	27.3	28.18	28.88	30.08	x
EP 301	EPDS-2016-6	2	1.6	6	2.4	1.54	50	4	7.37	7.81	8.19	8.54	9.15
EP 302	EPDS-2016-12	2	1.6	12	2.4	1.54	55	4	13.72	14.35	14.86	15.31	16.11
EP 303	EPDS-2016-20	2	1.6	20	2.4	1.54	60	4	22.09	22.9	23.53	24.1	x
EP 304	EPDS-2018-8	2	1.8	8	2.7	1.73	50	4	9.53	10.04	10.46	10.84	11.51
EP 305	EPDS-2018-14	2	1.8	14	2.7	1.73	55	4	15.85	16.52	17.06	17.54	18.8
EP 306	EPDS-2018-20	2	1.8	20	2.7	1.73	60	4	22.12	22.91	23.55	24.12	x
EP 578 ©	EPDS-2020-4	2	2	4	3	1.92	50	4	5.31	5.66	5.97	6.25	6.78
EP 579 ©	EPDS-2020-6	2	2	6	3	1.92	50	4	7.44	7.87	8.24	8.58	9.18
EP 307	EPDS-2020-8	2	2	8	3	1.92	50	4	9.56	10.06	10.48	10.86	11.53
EP 580 ©	EPDS-2020-10	2	2	10	3	1.92	50	4	11.67	12.23	12.7	13.11	13.83
EP 308	EPDS-2020-12	2	2	12	3	1.92	55	4	13.78	14.39	14.9	15.34	16.17
EP 309	EPDS-2020-16	2	2	16	3	1.92	55	4	17.97	18.68	19.25	19.75	x
EP 310	EPDS-2020-20	2	2	20	3	1.92	60	4	22.14	22.93	23.56	24.15	x
EP 582 ©	EPDS-2020-25	2	2	25	3	1.92	65	4	27.34	28.22	28.91	x	x
EP 311	EPDS-2020-30	2	2	30	3	1.92	70	4	32.52	33.47	34.43	x	x
EP 312	EPDS-2025-12	2	2.5	12	3.75	2.4	55	4	13.84	14.43	14.93	15.37	x
EP 313	EPDS-2025-20	2	2.5	20	3.75	2.4	60	4	22.19	22.96	23.59	x	x
EP 583 ©	EPDS-2030-8	2	3	8	4.5	2.88	60	6	9.69	10.16	10.57	10.94	11.59
EP 314	EPDS-2030-12	2	3	12	4.5	2.88	60	6	13.89	14.48	14.97	15.4	16.3
EP 315	EPDS-2030-20	2	3	20	4.5	2.88	70	6	22.24	23	23.62	24.26	26.92
EP 316	EPDS-2030-30	2	3	30	4.5	2.88	80	6	32.6	33.53	34.53	36.23	x
EP 584 ©	EPDS-2040-12	2	4	12	6	3.85	60	6	13.97	14.54	15.02	15.45	16.39
EP 585 ©	EPDS-2040-20	2	4	20	6	3.85	70	6	22.3	23.05	23.66	24.35	x
EP 586 ©	EPDS-2040-30	2	4	30	6	3.85	80	6	32.65	33.57	34.61	x	x
EP 587 ©	EPDS-2040-40	2	4	40	6	3.85	90	6	42.96	44.01	x	x	x

© = New Item

Milling Tools always on Stock in Germany

x = no contact